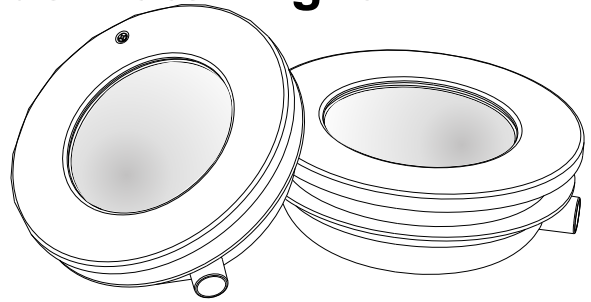


# UL-H100 & UL-H200 Series Underwater Light User Manual



**PLEASE READ THE FOLLOWING CAREFULLY AND  
KEEP THIS USER MANUAL SAVE FOR FUTURE REFERENCE**

## DANGER ! RISK OF ELECTRICAL SHOCK OR ELECTROCUTION

This underwater light fixture must be installed by a licensed or certified electrician or a qualified serviceman in accordance to the requirements of your government standard or local authorities. Improper installation will create electric hazards which could result in serious injury, death as well as damage to the property. Before servicing the light, disconnect the power supply from the circuit breaker. Failure to do so could result in serious injury, death and or damage to the property.

### ⚠ WARNING ⚠

#### ● Preparatory steps which must be completed by the electrician before light is installed, see Figure 1.

1. Ensure that the electrical system and its wiring for the pool conform to the requirements of your government or your local authorities. The installation of the Underwater Light should only be performed by a licensed electrician.
  - a. The junction box, or the low voltage transformer for 12 volt Underwater Light model is to be located at least 120CM from the edge of the pool, see Figure 1.
  - b. The mounting bracket must be properly installed so that the top edge of the Underwater Light lens is at least 45CM below the surface of the water in the pool, see Figure 1.
2. The center of the mounting hub will line with the top of light lens. See Figure 2.
3. If pool surface is to be plastered, you must allow proper concrete cutback for plaster thickness.
4. Wrap a length of the cord up to a maximum of 240CM long on the back of the light assembly. Wind a minimum of three (3) wraps of cord so that the last wrap stops at the top of the light. This extra cord allows you to bring the light out of the pool for revamping and serving.
5. The light fixture and all metal parts that are within 240CM of the pool must be properly protected with non-ductile materials and that the connections must be waterproof.
6. Consult the local Government Building Department to be certain that the pool's electrical system meets all applicable requirements.

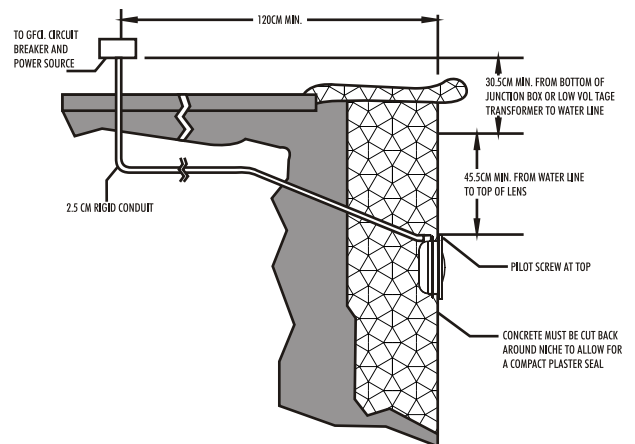


Figure 1.

#### INSTALLATION (for H-100 & H-200)

#### ● Perform the following steps after the electrical system requirements are met.

1. Locate position on a vertical wall where light is to be installed. The top of the light lens must be 45CM below normal water level, see Figure 1.
2. Connect conduit to midst of Mounting Spacer (left of Bracket), see Figure 3.
3. (For H-100 vinyl pool only) If pool surface is to be plastered, you must allow proper concrete cutback for plaster thickness. Finish concrete surface must be flush with Mounting Spacer. CAUTION: Finish area surrounding Mounting Spacer MUST be flat and flush with the face of Mounting Spacer, this ensures a snug fit between light and wall, see Figure 2.
4. (For H-100 vinyl pool only) Rotating Locking System ensures light is secured to bracket, see Figure 2.
5. After pool surface is finished, trim the Conduit.
6. Wrap a length of the cord up to a maximum of 240CM long on the back of the light assembly. This extra cord allows you to bring the light out of the pool for revamping and servicing.
7. Connect cord electrical wires at Junction box, through Conduit, be careful not to pull the 75mm-80mm of slack cord at the light through the conduit when connecting the wires.
8. Connect all wires to the corresponding circuit wires in the junction box and feed paraffin.
9. Secure the junction box cover in place.
10. Before operating the light for more than 10 seconds fill pool until the Underwater Light is completely submerged in water. To check for proper operation turn on main switch or circuit breaker as well as the switch that operates the Underwater Light itself.

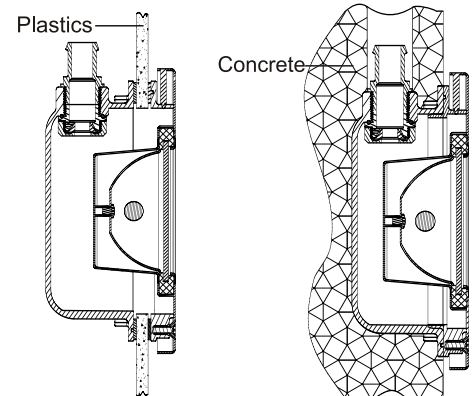


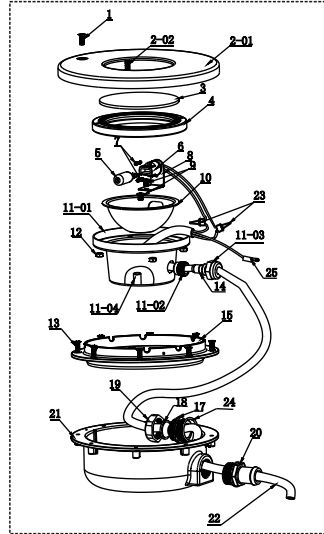
Figure 2.

Figure 3.

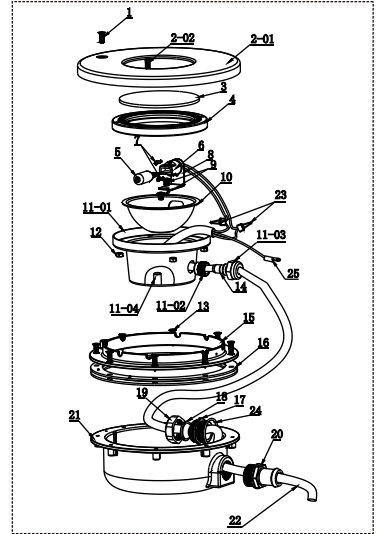
#### ● Winterizing: Light should be left in place for winterization.

## REPLACEMENT PARTS

H-100 Underwater Light Replacement Parts			
Item	Part No	Qty	Description
1	040602	1	screw for lid
2	0411011	1	lid
	0411012	4	screw
	0411013	1	placement screw
3	041102	1	glass cover
4	041103	1	washer
5	040608	1	bulb
6	040606	1	porcelain base for bulb
7	040609	2	base screw
8	040607	1	shelf for base
9	041104	2	round head screw
10	041105	1	reflector cover
11	0411061	1	inner base
	0411062	1	jointing screw
	0411063	1	nut $\Phi 9.0 \times 21 \times 14.5$
	0411064	1	M5*10 nut
	0411065	1	M5*5 nut
	0411066	1	placement washer for screw
12	040605	4	M5 nut
13	041116	8	screw
14	041108	1	placement washer for screw
15	030408	1	copper nut
16	041118/041109	1	placement plate for nuts
	041117	2	washer
17	041110	1	jointing tooth head
18	041111	1	waterproof o'ring for cable
19	040717	1	nut
20	040721	1	joint for wire & pipe
21	041112	1	housing
22	041113	1	cable
23	041114/041115	2	pressing ring
24	040719	1	o'ring
25	040618	1	earth cable

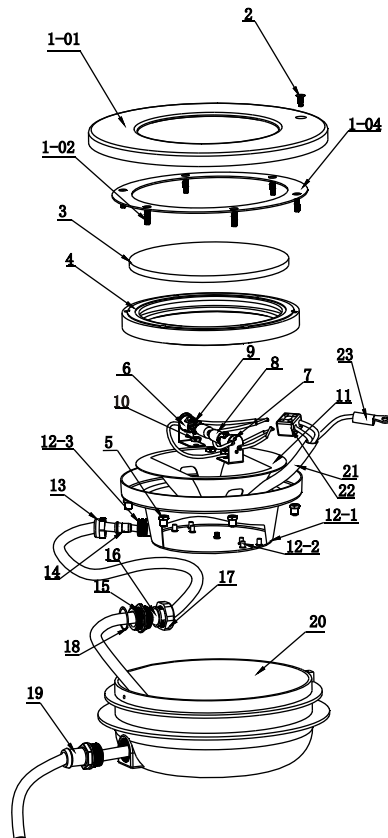


FOR CONCRETE POOL



FOR FIBREGLASS POOL, PRE-FAB  
MODULAR POOL AND VINYL LINER POOL

H-200 Underwater Light Replacement Parts			
Item	Part No	Qty	Description
1	040611	1	Lid
	0406012	6	Screw
	0406013	1	Placement screw
	0406014	1	Pin up ring
2	040602	1	Screw for lid
3	040603	1	Glass cover
4	040604	1	Washer
5	040605	6	M5 nut
6	040606	2	Porcelain base for bulb
7	040607	2	Shelf for base
8	040608	2	Bulb
9	040609	4	Base screw
10	040610	3	Stainless nut
11	040611	1	Reflector cover
12	0406121	1	Inner base
	0406122	7	Jointing screw
	0406123	1	Jointing nut
13	040613	1	Copper nut $\Phi 10.5 \times \Phi 21 \times 12$
14	040614	1	Plastic sleeve
15	040720	1	Jointing tooth head
16	040718	1	Cable seal o,ring
17	040717	1	Cable nut
18	040719	1	O,ring
19	040721	1	Joint for wire & pipe
20	040615	1	Outer base
	030408	1	Copper nut
21	040616	1	Cable
22	040617	1	Porcelain jointer
23	040618	1	Earth cable



## WARNING

⚠ Never operate this Underwater Light for more than 10 seconds unless it is totally submerged in water. Without total submersion, the light assembly will get extremely hot, which may result in serious injury to pool users, installers, or bystanders, or damage to property.

⚠ Be sure the power has been turned off before installing or removing lamp. Allow lamp to cool before relamping. This light fixture uses a Halogen Quartz lamp. Do Not touch lamp with bare hand as it may still be hot. Use a cloth or a non-ductile material to replace the lamp, this is also help eliminate finger prints from getting on lamp.